



# TEXAS KNIGHTS

Official Bulletin of the Texas Chess Association

Vol. XVII, No. 8

June-July, 1976

## Houston

The Houston Open has grown to the point where it has to be called 'The Biggest Tournament in Texas!'

This year's \$4,000 Prize Fund brought in a total of 228 players, 157 in the reserve section and 71 in the open section. This compares well with last year's entry total of 233 when one considers the general downswing in chess activity that has occurred since the 'Fischer Boom' in 1972.

The top section was won by Robert Atlas (2122) with a 4 1/2-1/2 score. Tied for second at 4 pts. each were Ron Henley (2313), Joe Bradford (2216), Steve Spencer (2198), Robert Brieger (2073), Bill Reuter (2039), Dean Yarbrow (1826), and Robert Chalker (1744).

The reserve section was taken by Mike Greco's 5-0 mark. Tied for second at 4-1/2 pts. each were Nelson Ford (1797), David Holder (1779), Fritz Reuter (1746), Owen Johnson (1677), and Alex Juarez (1753). Scoring 4 pts. were John Maynard (1785), Mark Stephens (1772), Donny Gray (1711), Steve Lynn (1709), Jerry Holder (1633), Paul Gabriel (1625), Richard Sansing (1599), Glen Clark (1569), Steve Quintanilla (1540), and Hartwig Volz (Unr.).

Bicentennial GREETINGS

# Highlights

WHICH WAY WILL HOUSTON GO?

by Tom Weaver

The U.S. Chess Federation has named Houston 'Chess City of the Year.'

This is a well deserved honor for the Houston Chess Club but we hope that it will not 'cap' the tremendous progress made by the H.C.C. over the last five years. Rather, this award should be just a marker along the way to greater things for Houston and all of Texas.

Talking to the H.C.C. central organizer, the woman with the money, Lynne Babcock, at the recent Houston Open has led me to believe the H.C.C. could go either way.

There is a good chance that Shell Oil will soon agree to begin sponsoring a gigantic annual open class championship tournament in Houston. This would be like getting a \$30,000 donation to Texas Chess every year!

There is also a chance that Shell won't see fit to do this (Lynne says the current feud between the U.S.C.F. and the American Chess Foundation has upset certain high-up corporate officials) and that Lynne will be left with the problems of rising costs (maintenance of the H.C.C. building has gone from \$700 to \$1400 per year) and losing chess tournaments (there were enough entries at the 1976 Houston Open to pay for the \$4,000 Prize Fund and T.D. Fee, but guess who had to pay for advertising (\$400 to CL&R!) and ballroom rent (\$1,000) out of her own pocket?).

BIRMINGHAM, MICHIGAN-- Michigan Chess Postal Chess Coordinator Jim Marfia has notified TCA officials that the MCA has accepted a challenge by the TCA for a match through the mails. Final arrangements are now in proceedings and the match should start within a few weeks. Proposed is a twenty-five board match with players having two games simultaneously with the opponent. All interested TCA members should contact TCA Postal Director Ken Hackney or Bill McCarty. The only prerequisite for entry is that one must be a member in good standing in the TCA. Final details should be available in the next issue of Texas Knights.

## NEW ORGANIZERS - LISTEN UP!

Has someone told you that your club must pay to affiliate itself with the USCF before your tournament can be rated?

If so, that someone is wrong.

All you have to do is get permission from the Texas Chess Association to list the T.C.A. as the sponsoring affiliate.

Since the T.C.A. has been affiliated with the U.S.C.F. for three decades, you can be sure that the U.S.C.F. will not object. And the T.C.A. would be happy to have more T.C.A. required tournaments--per unitum vis.



SOUTHWEST OPEN CHESS TOURNAMENT

PRIZE FUND \$4,000.00, UNCONDITIONALLY GUARANTEED (MORE IF ENTRIES PERMIT)

DATE: Sep 4, 5, 6, 1976. Schedule as follows: Rd 1 Sat 1 PM, Annual Business meeting of the Texas Chess Assoc 6 PM, Rd 2 7 PM, Rd 3 Sunday 9 AM, Rd 4 2 PM, Rd 5 7 PM, Rd 6 Mon 8:30 AM, Rd 7 2 PM

PLACE: Sheraton San Antonio Motor Inn, 1400 Austin Highway (Highway 81). This is approximately 2 miles south of Loop 410 on the northeastern part of San Antonio. Special rates for Chess Players: 1 guest \$16.00, 2 guests \$22.00, over 2 \$5.00 extra. For reservations call (512) 824-5371. In the meantime, the Mexican Trade Fair is to be held in San Antonio at the Hemis-fare Center at the same time that the S W Open and 15,000 hotel rooms have already been reserved in this area. The Sheraton San Antonio will hold a block of 40 rooms till 6 PM Sat. Sep 4th. This Motor Inn is a whole vacation resort in itself. Do you have a Mark Spitz in the family? There are two swimming pools, 1 regular and one Olympic size. For the families that have a future Jimmy Connors or Chris Evert there are 4 Asphalt Tennis Courts. Last but not least for the future Ernie Palmer's and Lee Trevino's there is a 9 hole golf course. These facilities are free to all registered guests. So, while you are playing chess, your family can enjoy itself.

REGIS-  
TRATION: 7 PM till 10 PM Fri nite Sep 3. 7 AM till 12 noon Sep 4.

ENTRY FEE: \$21.00 if mailed by Aug 28, 1976. \$26.00 at the door. U S Chess Federation and Texas Chess Assoc membership is required. You can join or renew memberships when registrating. Mail all advance entries to Pete Prattes P. O. Box 7231, San Antonio Texas 78207.

PLAY: 7 Rounds Swiss, 45 moves for the first two hours. 20 moves per hour thereafter. Accelerated pairing system will be used if number of entries justify.

SPONSER: The San Antonio Chess Club and the Texas Chess Assoc.

PRIZES: 1st, \$700.00, 2nd \$400.00, 3rd \$200.00, 4th \$100.00  
Expert 1st \$300.00, 2nd \$150.00, 3rd \$50.00  
"A" 1st \$300.00, 2nd \$150.00, 3rd \$50.00  
"B" 1st \$300.00, 2nd \$150.00 3rd \$50.00  
"C" 1st \$250.00, 2nd \$100.00, 3rd \$50.00  
"D-E" 1st \$250.00, 2nd \$100.00, 3rd \$50.00  
"UNR" 1st \$150.00, 2nd \$50.00 (The maximum that an unrated may win is \$300.00)  
Upset Prize \$100.00  
Trophies for: 1st, 2nd, 3rd and 1st Expert. 1st "A", 1st "B", 1st "C"  
1st "D", 1st "UNR"

FOOTNOTE

Last years irregularities of not being able to get the rounds started on time will not be repeated; We were understaffed due to faulty planning. This year we will have a director, an assistant director, a clerk on the wall charts, and a clerk on the pairing cards. We the Board of Directors of the San Antonio Chess Club sincerely hope that your stay in the Alamo City will be an enjoyable one.





## LONE STAR ROUNDUP



CORPUS CHRISTI - Former State Champion John Bob Payne (2155) has been undergoing cancer treatments at M. D. Anderson Hospital in Houston since early this year. We are happy to announce that Bob is now feeling better and is back at work on his old job as sales manager at KZTV in Corpus.

Glenn Escovedo (1886) lays claim to the Corpus Christi Speed Chess Championship due to his 10-4 score at a 5-minute tournament held April 18. Second was Bill Wheeler (1910) with 8 pts., followed closely by Carl Clayton (1850) with 7-1/2 and Tom Weaver (1802) with 6-1/2.

As a warm-up for the Buc Days Open the Corpus Club held a Rating Tournament in April. One game was played each Tuesday night that month to make four rounds. Glenn Escovedo missed the first round but came back to beat Trenton Burnett (1550) in the last round to tie for first. Also finishing with 3 pts. were Ed Mohn (1624) and Folk Weaver (1592). Burnett won the 19-player tourney on median tiebreaking points.

The annual Buccaneer Days Open was held May 1 and 2 at the Hilton Inn with Dennis Steinmetz directing. This year's event was split into an open and a booster (for players rated below 1700). Twelve players entered the open and 18 competed in the booster.

Ron Henley (2313) won the top section \$120 & trophy with 4-1/2 - 1/2, his only draw being a sharp fourth round encounter with Glenn Escovedo. But Glenn was upset in the last round by tough youngster David Naiser (1726) from El Campo. David's 3-1/2 pts. took second place but he chose to accept the 'B' trophy and \$50 and let Glenn split the second place \$50 with Tom Weaver. Glenn's 3 pts. also won the 'A' trophy. Lou Thurston (1845) of Kingsville and Ken Sund (1552) of McAllen had solid 2-1/2's, while Billy Patteson (1957), Art Riley (1781), Joe Medina (1734), and Rick Rodgers (1704) settled at 2 pts.

The booster section was trompled on by James Martin (1683) who scored 5-0! The former West Texan took \$100 and trophy back to his Victoria home. Class 'C' trophy and \$50 was won by Steve Alden (1478) of McAllen with 3-1/2 pts., Class 'D' and \$40 by Ysidro Rodriguez (1341) of CorpusC with 3 pts., while an Iranian from San Antonio named Mohammed Feyznia garnered the unrated trophy and \$30 with 3 pts. Other good scores were Bruce Payne (1605) with 3-1/2, Mevis Smith (1691) with 3, and Joaquin Fox (1581) with 3. At 2-1/2 pts. were Chet Reno (1665), Ed Mohn (1624), Ed Del Rio (1610), Pete Prattes (1440), Rafael Jacquez (1359), and Tim Painschab (Unr).

The Corpus Christi High School Championship was held at Richard King H.S. May 8. The unrated event was again sponsored by Mrs. Olivares. She has done a good job of keeping a chess club going at King for several years now.

McAllen H.S. easily won the team championship with King second and Corpus Christi Ray third. The individual champion was Steve Alden with 4-1/2 - 1/2.

The Corpus Christi City Championship playoffs will start early this summer as soon as the college students are back in town.

AMARILLO - The 1976 Amarillo City Chess Championship was held January 10-11 and was won by Bill Snead (1805) according to the Amarillo Chess Nut.

Bill won the 14 player event with a perfect 5-0 score to finish a full point ahead of second place Roy Dougherty (1470) and two points in front of Mohammed Hakimi (1686) and Maurice Bugnone (Unr.).

The Amarillo Junior Championship, held the same weekend, was taken by Brad Webster (1596) with a 4-0 score over two opponents.

AUSTIN - The Spring City League was won by IBM (Immortal Brilliance Machine) composed of J. Bradford, J. Bell, P. Stewart, L. Fulbright, and J. Maynard over five other strong teams. The Summer League started June 9 but it may not be too late to call Richard Sanning at 345-2353 for entry.



DENTON - Gary Rogers reports that the North Texas Limited 2000 was a success as 33 players entered (30 were expected).

Jeff Gamble and Stanley Capps tied for first at 4-1/2 pts. to win \$75 each. Danny Dunn scored 4-1 for top 'B'; Robert Arthur, Bill Aderhold, and James Petty tied for 'C,' and 'D' was five-way tie with Paul Robinson taking the trophy.

This was a non-TCA, and Gary took a poll to see if he should require TCA membership at a future tournament. Of those polled, 11 said they would have paid TCA dues to play while 7 said they would not have.

LUBBOCK - The Ninth Rank indicates that Lubbock Chess Week was a grand success:

"Lubbock mayor Roy Bass presented the Lubbock Chess Association an official proclamation declaring April 3-11 as Chess Week 1976. What a week it was! Tournaments, skittles, a million frenzied speed games, fans, supporters, organizers, and the affable Dumitru Ghizdavu, visiting International Master, combined to make this one of the most exciting periods in Lubbock chess history. The events of the week were designed to appeal to as broad a base of players as possible, from beginner to master, high school student to old tyro."

The first skirmish of the week was held Saturday, April 3, at the Texas Tech University Center and involved a tussle between 21 students for the school championship. David Thomas directed the four-round Swiss which saw Andrea Myers and Dean Yarbrow tie for first with 4 pts. each. Yarbrow, a medical student with a class 'A' rating, won the ensuing playoff game.

The Greater Lubbock Team Championship got under way on Sunday, April 4, also at the University Center. Nine area teams, each with four players, fought it out for team trophies and individual gift certificates. The Tech Chess Club took top team honors while Monterey was the top high school team. Ron Clark and Gary Huber tied for the board one prize, David Holder was top board two, Mike Cocanougher top board three, and Hung Nguyen top fourth board.

The Lubbock Chamber of Commerce gave I. M. Dumitru Ghizdavu a 'red carpet welcome' on his arrival at the airport. He was sponsored by the U. S. Chess Federation (they paid his travel expenses to Lubbock) and the L.C.A. (which put up the grub and a bunkhouse for his stay) as part of the U.S.C.F. program to increase chess interest by having leading players speak to high school students in all parts of the country. Dumitru visited the club Tuesday night after giving lectures and demonstrations on chess at Monterey, Friendship, and Coronado High Schools. In all of his engagements Dumitru answered questions in a pleasant manner and acted in a way that made everyone feel that this U.S.C.F. program is worthwhile. His standard discussion concerned how to play chess and to play better." He stated that you should start by learning one opening at a time, not trying to memorize a lot of different lines from M.C.O. or E.C.O. "An example," he stated, "is the Sicilian. You don't have to know all of the lines for black, just one. I put together my own 'book.' You must watch for those who prepare against your 'book.' Don't try to learn dangerous or complicated variations to start. Start with simple lines and where to put pieces. Study your games and learn from your mistakes. You should play slow, I don't think 5-minute chess is very good for learning." During the questioning he talked of his games with Spassky and Karpov and noted that "Karpov is young and will get stronger." When asked why chess is so much more popular and widely followed in Eastern Europe, he replied, "Chess is so strong in the Eastern countries because sports are the only thing for people to do. They don't have enough money for other things."

On Wednesday, Dumitru gave a simul at the Travelodge Motel. He won 21, lost 2, and drew 1. Dean Yarbrow and David Thomas were the victors while Andrea Myers picked up the draw.



The Southwestern Public Service Co. hosted the Lubbock Speed Chess Championship on Thursday. Gary Huber won the double round robin event with 10 1/2-3 1/2 while Mike Cocanougher and Mike Lanier both had 9 pts. to tie for second. Last year's Champ, Mike Burns, finished at fourth place with Arnold Rubin at 8-1/2 but was nice enough to donate a traveling plaque on which each year's new champ will have his name engraved.

The final event of chess week was the combined Lubbock City Chess Champs. and Lubbock Jr. Champs. This tournament drew only 13 entries but those who came battled with "fist, tooth, nail, and wet noodle. Congratulations to Andrea Myers, whose never-say-die attitude made her the Lubbock City Champion." Behind Andrea's 5-0 score came Scott Rodman and Richard Snyder at 4 pts. while N. H. Redington scored 2 pts. to win the Junior Championship.

Dumitru Ghizdavu said good-bye over the air on Monday, April 19, during a 30-minute interview on educational T.V.

TULIA - The Ninth Rank reports that "on April 25, nine Lubbockites set out for Tulia, TX, to do battle with the Northern Hordes from Amarillo. We drove like mad to make the 9 o'clock registration (were 15 min. late), but when we got there we found the hordes playing chess on their cars. Nobody had the key to the building."

Once things got started, all went well. Each person played two games with the same opponent, one black and one white. The crucial game was probably David Thomas' defeat of Gary Simm's Latvian Countergambit on board one. This helped give Lubbock a narrow 9-7 victory over the tough Amarillo team.

Playing for Amarillo: Simms, Webster, Dougherty, Young, Henderson, Everett, Ramos, and Houston.

Playing for Lubbock: Thomas, Huber, Matthews, Cocanougher, Childress, Myers, Biesele, and Nguyen.

SHREVEPORT - Tom Amburn writes:

"The Holiday in Dixie Open was held in Shreveport, LA. and directed by myself. Despite the small (20 players) turnout, it was an exciting tournament, won by Donny Gray of Arkansas. Over \$400 in cash prizes were awarded, courtesy of Holiday in Dixie. Only one Louisiana resident outside of Shreveport attended the tournament. This was probably due to the Louisiana Chess Association Bulletin coming out six weeks late, only days before the tournament. A word of thanks goes to Texas Knights of the TCA and The Arkansas Chess Newsletter for carrying announcements on the tournament."

ARLINGTON - A match between North Texas State University and the University of Texas at Arlington held May 2 was won handily by N.T.S.U., 7 1/2-4 1/2. Gary Rogers sent us the games from this event and we plan to print a few with annotations in the next T.K.

SAN BENITO - The San Benito H.S. chess team has unseated McAllen as the Valley Champion. Jack Horvath recently organized a rated tourney, called the Magic Valley Open, in San Benito and plans to sponsor "at least two U.S.C.F. tournaments per year."

WACO- Veteran Bill Janes has won the Greater Waco City Championship with a victory over Lee Au. The final result was three wins, two losses, and five draws.

EL PASO - Quoting the Knight Beat, April, 1976:

"The U.S.C.F. Secretary, Dr. Lee Hyder, informed C.C.E.P. President Dr. Lindsay Phillips by telephone on 16 March 1976 and confirmed by letter on 9 April that the U.S.C.F. Policy Board had accepted the bid of the C.C.E.P. to hold the 1977 U.S. Open Chess Championship in El Paso, Texas. The event will be held at the Airport Hilton Inn on 13-26 August 1977 providing that the following conditions are met:

(1) The C.C.E.P. insures the U.S.C.F. against loss up to \$5,000 with one-half of that sum payable to U.S.C.F. by 20 August 1976 and the other half payable by 1 August 1977.



(2) The remainder of the \$5,000 contribution after losses are covered shall be returned to the C.C.E.P.

(3) All net profits, if any, will be shared equally between the U.S.C.F. and C.C.E.P."

Texans who would like to help the Chess Club of El Paso raise \$2,500 by August 1 should send their donation to T.C.A. Treasurer Bill McCarty, 2615 Buchanan, Odessa, TX 79763. This amount must be in the bank, not just promised, or the U.S. Open will go elsewhere--probably to California. Support the C.C.E.P. with your tax deductible votes (dollars).

JUNIOR NEWS - The Texas Junior Championship to be held June 26 and 27 in San Antonio at Trinity University will be fully reported in the next T.K. The T.C.A. has put up a lot of money for trophies and chess clock prizes for this one. Bill Church will sponsor the winner to the U.S. Junior Open.

POSTAL NEWS - Entries are still being taken for the 1976 Texas Correspondence Chess Championship. Membership in the T.C.A. is required plus a \$2 entry fee per section entered. We already have four full sections of seven players each going and will start more as fast as the entries come in to T.C.A. Sec.-Treasr. Bill McCarty. Please remember that as the games are completed, the winner is responsible for sending the result to Bill. Results of the 1974 and 1975 Postals should be sent to the C.C.L.A. since those years are being handled by the Correspondence Chess League of America.

The finals of the 1974 Postal are well started--each year the top two players from each section are paired into the final (second) round and start playing other qualifiers without any wait. The winner of the final round gets a trophy proclaiming him as Texas Postal Champ for that year. The section winners get certificates.

T.C.A. Postal Director Ken Hackney writes "Keep up the good job of advertising the tournament. Bill wants a mark of five sections this year, so let's try to give them to him. Incidentally, I wonder if anyone recognized the ORK from The Scarecrow of OZ on page 17 of the April-May '76 Texas Knights? Takes an ole OZ connoisseur to recognize that critter. I have the whole OZ book set...."



## LARGE REWARDS You're All Invited

The Eleventh Invitational  
UNITED STATES JUNIOR CHESS CHAMPIONSHIP

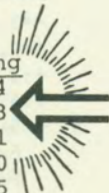
June 20-26, 1976

In the Faulkner Lounge, University Center  
Memphis State University  
Memphis, Tennessee

**Art pays**

An eight-player round robin (all play all) tournament of the following players:

Name	Residence	Birthdate	Rating
Michael A. Rohde	South Orange, New Jersey	08/26/59	2364
Ronald W. Henley	Houston, Texas	12/05/56	2353
John P. Fedorowicz	Piscataway, New Jersey	09/27/58	2351
Mark C. Diesen	Potomac, Maryland	09/16/57	2350
Nick E. DeFirmian	Santa Barbara, California	07/26/57	2335
Yasser Seirawan	Seattle, Washington	03/24/61	2328
Jonathan Tisdall	Syracuse, New York	08/26/58	2327
Kenneth W. Regan	Paramus, New Jersey	09/13/59	2300



\*\*\*\*\*

1974 TEXAS CORRESPONDENCE CHAMPIONSHIP

Preliminary Round Results

CCLA

	Section #140011	Rating	1	2	3	4	5	6	7	FS	NR
	**1. Kenneth Sund, McAllen	865	*	1	1	1	1	1	1f	6-0	1
	+:2. Tom Weaver, CorpusC	889	0	*	0	1	1	1	1f	4-2	0
	+:3. Jim Campion, Dallas	1110	0	1	*	0	1	1	1f	4-2	1
	4. Alfred Stewart, Wichita Falls	690	0	0	1	*	0	1	1f	3-3	0
	+:5. Ken Hackney, Nacogdoches	182	0	0	0	1	*	0	1f	2-4	0
	6. Charles Beacham, SanA	491	0	0	0	0	1	*	1f	2-4	0
	7. Bill Wheeler, Plainview	900	0f	0f	0f	0f	0f	0f	*	0-6	0
	<u>Section #140021</u>										
	**1. Olin Chism, Dallas	989	*	1	1/2	1	1	1	1	5-1/2	1/2 0
	**2. Herman Scott, Ft. Worth	829	0	*	1	1	0	1	1	4-2	0
	3. Walter Stapp, Crowell	744	1/2	0	*	0	1	1	1	3-1/2	2-1/2 0
	+:4. John White, Irving	855	0	0	1	*	1	1	1	4-2	0
	+:5. R. J. Baker, Austin	882	0	1	0	0	*	1f	1	3-3	0
	6. Harold Smiley, Goldsmith	594	0	0	0	0	0f	*	1	1-5	0
	7. Don Day, Canyon	558	0	0	0	0	0	0	*	0-6	0
	<u>Section #140031</u>										
	**1. Edgar Trull, Seguin	819	*	1	1/2	1	1	1	1	5-1/2	1/2 0
ZX	+:2. W. A. Allen, Weslaco	786	0	*	0	1	1	1	1	4-2	0
	+:3. A. G. Clement, Pleasanton	706	1/2	1	*	0	1	1	?	3-1/2	1-1/2 1
	+:4. Bobby Taylor, Mt. Pleasant	220	0	0	1	*	?	0	1f	2-3	1
	5. R. D. Johnson, Huntsville	752	0	0	0	?	*	1	1	2-3	1
	+:6. Melvin Friedrich, Belton	625	0	0	0	1	0	*	1	2-4	0
	7. Curtis Beard, Eden	285	0	0	?	0f	0	0	*	0-5	1
	<u>Section #140041</u>										
	**1. Steve Lynn, Austin	766	*	1	1/2	1/2	1	1	1	5-1	0
X	+:2. Barry Biggs, Austin	725	0	*	1	1/2	1	1	1	4-1/2	1-1/2 0
	+:3. Bill Janes, Leroy	877	1/2	0	*	?	1	1	1	3-1/2	1-1/2 1
	+:4. Jeff Gamble, Hurst	705	1/2	1/2	?	*	1	1	1	4-1	1
	5. Don Matheson, Ft. Worth	655	0	0	0	0	*	0	1	1-5	0
	6. Phil Palmer, Dallas	617	0	0	0	0	1	0	0	1-5	0
	7. R. J. Otts, Dallas	181	0	0	0	0	0	1	0	1-5	0
	<u>Section #140051</u>										
	**1. Alfred Stewart, WichitaF	690	*	1	1	?	1	1f	1f	5-0	1
	**2. Zack Coombes, Austin	788	0	*	1	1	?	1f	1f	4-1	1
	+:3. Robert Potter, Dallas	1063	0	0	*	1	1	1	1f	4-2	0
	+:4. James Sebesta, Austin	551	?	0	0	*	?	1	1	2-2	2
X	+:5. Calvin King, Dallas	500	0	?	0	?	*	?	?	0-2	4
	6. Charles Beacham, SanA	491	0f	0f	0	0	?	*	?	0-4	2
	7. Harold Smiley, Goldsmith	594	0f	0f	0f	0	?	?	*	0-4	2

\*\*Indicates that player has clinched berth in finals and has started play.  
 +:Indicates that player still has chances of obtaining finals.  
 X Indicates that TCA dues are in arrears, therefore ineligible unless corr'td  
 Z Indicates " CCLA " " " " " , " " " " "



# LETTERS

418 Summit Drive  
Richardson, Texas 75080  
April 2, 1976

Mr. Tom Weaver, Editor Texas Knights  
3617 Lamont  
Corpus Christi, Texas 78415

Dear Mr. Weaver:

The list of Texas State Champions given in the March, 1976 issue of Texas Knights is not only incorrect, it is confusing. For example, what do you mean by the Official Honor Roll of TCA Champions? TCA champion is not necessarily the same as state champion.

I should think that the official state champion would be the winner of an official state championship tournament, or in the absence of one, the highest ranking Texan in the Southwest Open. However, the TCA champion would be the winner of this tournament, regardless of where he lived.

My good friend Mevis R. Smith is shown in your tabulation as the 1946 champion. The 1946 Southwest Open was held in Houston and Mevis was TCA President, but I won the tournament and, as I recall it, Mevis was third.

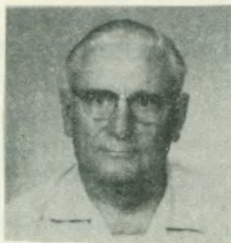
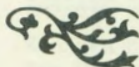
Two or three years ago Texas Knights published a list of Southwest Open winners, seconds, and thirds, going back to 1932, which was correct according to my records and memory. I won the tournament seven times and was second to Carl Pilnick of New York in 1944 and Robert G. Wade of New Zealand in 1947, so on that basis I was Texas champion nine times, one more than Ken Smith.

What about my other records (simultaneous exhibition 1938 - 46 wins, two losses, two draws, and simultaneous blindfold 1939 - ten wins, one loss, three draws) have they ever been surpassed by a Texas player? Koltanowski played over 100 in a simultaneous given in Dallas in 1941 but, of course, he was not a Texan.

One important fact I never tire of pointing out is that TCA pioneered the Swiss system and is directly responsible for its worldwide use now. Koltanowski explained it to us and we used it in the 1942 Southwest Open, played in Corpus Christi, and in every Southwest Open since. The 1947 USCF Open was also played in Corpus Christi and jointly sponsored by USCF and TCA. I was a USCF Vice-President at the time and insisted upon using the Swiss. That tournament gave the Swiss worldwide publicity. C. J. S. Purdy, Australian master writing in "Chess World" said: "When I read that a tournament with 87 players was played in 14 days I wondered if it was a misprint or if the Texans are supermen after all." Some histories of chess say the Swiss was used for the first time in the Pennsylvania State tournament of 1943. Nay, not so.

Sincerely,

*J. C. Thompson*



418 Summit Dr.  
Richardson, Texas 75081 (note change in  
April 19, 1976 zip code)

Dear Tom:

Thanks for your letter. I believe our ideas are rather close together. I certainly agree that TCA has the right to designate who is TCA champ. It just seems to me that that individual would be the winner of the premier tournament sponsored by TCA, or, better still, the winner of the Grand Prix, now that there is such a thing. (Note the spelling - prix is masculine in French, therefore Grand, not Grande as it has been listed in Texas Knights).

By all means publish my letter if you think it has sufficient reader interest. I enclose a recent photo which I had made for passport purposes. No need to return it - I've got a scad of them on hand.

I am quite positive that Mevis Smith did not win any state tournament in 1946. I wish he had since at his best he was a strong player as well as a promoter of the game. He deserves any recognition that he can be given.

I don't understand Ron Abplanalp's including Mevis in the Honor Roll unless he had in mind Mevis's contributions to chess. Ron gave me copies of all Texas Knights for the period in which he was editor and, as I pointed out in my previous letter, his listing of Southwest Open first, seconds, and thirds, going back to 1932 was correct.

After writing the above I did some digging into my files and found the August 1972 issue of Texas Knights which not only gives the Southwest Open listing but also the Honor Roll. I enclose this issue, but, please let me have it back at your convenience since I would hate to lose it. It brings back many a memory.

My favorite Southwest Open was the one played in Tulsa in 1949. Although I had not finished lower than second since 1939 there was considerable speculation as to how much longer I could hold off the younger generation, especially Kenneth Smith. Ken and I were both underdogs at Tulsa since everybody thought Bob Steinmeyer was bound to win. However, I beat both Ken and Bob and won 6-1, losing to Lee Magee, Nebraska champ, in the final round but winning the tournament on Swiss points.

I have been intrigued by your quotations from Texas chess history. In just about every case you were quoting me. For example, I was editor of the Texas Chess Magazine (later the Western Chess Magazine) and for awhile I put out a bulletin for the TCA, which is where you probably got the round-up of chess activities. I also wrote chess columns for the Dallas Morning News, the News's afternoon paper, the Dallas Journal, and, for several months, the Dallas Times Herald...



... I would concentrate on chess players and chess activities rather than publishing an annotated game from some recent event. The point is that Chess Life and Review, Chess Digest, and other chess publications adequately cover master games. On the other hand, I would publish interesting games from local and Texas players.

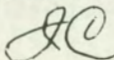
This formula worked very well when I was a chess editor and stimulated a great deal of interest. The present TCA is an outgrowth of my column in the Dallas Journal. I saw to it that the leading players and promoters over the state were on our mailing list and received copies each week of my column. So, when several of the Dallas players got together and organized the present TCA, we were already sure of support from El Paso, Brownsville, San Antonio, Lubbock, Houston, and Fort Worth. It was decided that it would be better to defer complete organization until the Labor Day tournament (1935) that we planned to be held in San Antonio, because of its central location, so the only official elected was myself, as Secretary-Treasurer. I was elected President at the San Antonio tournament. The board of directors chosen consisted of O. W. Manney and C. P. Gray, El Paso; Dr. R. S. Underwood and C. Gordon Webb, Lubbock; William Balz and John H. Hunter, Brownsville; Dr. J. Spivak, Houston; Clemente Villareal, San Antonio; Kenneth Hackney, F. H. McKee, and myself, Dallas; and G. A. Anderson, Fort Worth. G. A. Anderson was not the J. Allan Anderson who won the 1932 tournament and was a member of the U. S. team at the chess Olympiad at Hamburg in 1930.

Allan was my first teacher. I joined the Dallas YMCA when I was 16 and learned to play chess, along with about a dozen others of my age. Allan was Dallas city champion at the time, so we prevailed on him to be our coach. We organized a club and met every Saturday afternoon, Allan giving us instruction in the fine points of chess. We held a round-robin tournament, which I won. The strength of the tournament can be judged by the fact that in my final game I had a lone king against my opponent's king and queen. He stalemated me, so we played another game, which I won, relegating him to second place.

Allan's company transferred him to St. Louis, where he quickly established himself as one of the strongest players in the country. He returned to Texas in 1932, in time to win the state tournament we organized on the spur of the moment that year. He drew with Edgar Hartsfield but I won five straight, so our final round game was for the championship. He beat me in a ding-dong battle. The truth is, I suppose I even to this day have never been able to overcome my awe of him. He refereed the 1936 and 1939 tournaments and I was the favorite each time, but I finished fourth in 1936 and third in 1939. In the 1973 tournament he and Mevis Smith were always kibitzing at my board and I did poorly. As Reuben Fine once remarked, "Chess players have always excelled at alibis."

You mentioned Jimmy Creighton. He is an old friend of mine and I wish you would give him my best regards the next time you see him. Also, the S. W. Open winner in 1941 was Charles Hrissikopoulos, who hailed from Corpus Christi. The chances are he or members of his family still live there. (The name is pronounced Hrissikopoulos, that is, with accent on the Ko).

So much for now, best regards



P. S. Speaking of Hrissikopoulos, I decided to try to get in touch with him myself, so I called Directory Assistance and was given the number of a Charles Hrissikopoulos, who turned out to be my Charlie's cousin and told me Charlie lives in Washington, D. C. and is a psychiatrist. So, I called him and following is the conversation (we hadn't met in thirty years):

"Hello."

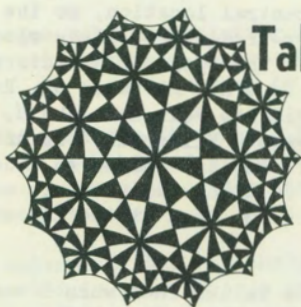
"Charley?" "Yes"

"This is J. C. Thompson."

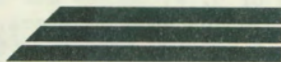
"I move P-K4."

Needless to say, we had a long conversation about old times and all the friends we had in common.

JCT



## Take Time To Think



3015 Placer Drive

Billings, MT. 59102

Dear Mr. Weaver,

Enclosed are copies of our revised article on K.G. A. for publication in your TEXAS CHESS ASSOCIATION bulletin.

Also copies of CHESS in which the articles first appeared. Hope you can make use of our work.

Thanks,

*Howard F. Hoene, Jr.*

Howard F. Hoene, Jr.

Billings Chess Club

Billings, MT. 59102



### Note:

Mr. Hoene's revised article appears on Pg 13 of this issue. This reprint should not be considered an endorsement of Chess. Actually, The British Chess Magazine seems to me to be the fastest, most reliable English language chess magazine.







KING'S GAMBIT (ANALYSIS)

3015 Placer Dr.

Billings, Montana 59102

June 7, 1976

Dear Mr. Weaver,

Thank you for your generous offer to publish our article. It's true we tried to get it published in CHESS DIGEST first but couldn't get a hearing on it.

Additional analysis has come to light in one line that can develop the opening further. I will enclose a rough draft of this line for your information and for your discretion.

Thank you again for the publication of our material...

- 1.P-K4 P-K4 2.P-KB4 PXP 3. N-KB3 P-Q3 4. B-B4 P-KR3 5. P-KR4  
N-KB3 6. N-B3 B-K2 7. P-K5 N-N5 8.P-Q4 PXP 9. NXP NXN (9...BXR  
CHECK TRANSPOSES ) 10. PXN BXR CHECK ( QXQ CHECK ETC. ALSO GOOD )  
11.K-B1 QXQ CHECK  
12. NXQ B-N6 (12. ...B-N4 13. N-B3 ! EVEN GAME )  
13. N-B2  
A. 13. ... B-KB4 14. B-Q3 BXB 15. NXB N-B3 16. BXP BXB 17. NXB NXP 18.  
R-K1 P-KB3 19. N-N6(EVEN GAME )  
B. 13. ... BXN  
14. KXB P-KN4  
15. P-KN3  
1.) 15. ... N-Q2 16. BXP CHECK KXB 17. R-KB1 N-B4 18.P-N4 N-R4  
19. PXP PYP 20.K-K2 CHECK K-K3 21. BXP R-R7 CHECK 22.K-Q3 EVEN

### *Readers' comments ?*

Tom , please scratch all the above and all lines sent after

13. N-B2 ??? The only playable line is this :

13. N-B3 P-B3 (if other Black moves , then 14. N-Q5 threatening  
KNIGHT FORK at QB7 ) 14. N-K4 N-Q2 (14. ... B-KB4 ?? 15. N-Q6 CHECK)  
15. N-Q6 CHECK !! and White has even or better chances.





# UNITED STATES CHESS FEDERATION

PUBLISHERS OF CHESS LIFE & REVIEW

914-667-8743

BILL GOICHBURG • MEMBER, POLICY BOARD • 450 PROSPECT AVENUE • MT. VERNON, NEW YORK 10553

## WASHINGTON WINS NATIONAL CHESS LEAGUE CHAMPIONSHIP!

The initial season of the National Chess League, a 9-city round robin of telephone team matches, saw an upset winner ranking with the greatest surprise teams in sports history.

When the season started in January, no one expected the Washington Plumbers to be a serious contender. Only one Senior Master and three Masters rated in the 2300s live in the area, and the availability of some of these was uncertain.

The heavily favored New York team had some 10 Senior Masters and at least that many 2300s Masters to draw from. Los Angeles, San Francisco, and Boston, thought to be New York's main rivals, each expected to use several Senior Masters and were capable of fielding all 6 boards at least 2300. Chicago also looked stronger than Washington on paper, while Cleveland seemed of about equal strength but more likely to turn out its top stars regularly.

But Washington started the season by scoring consecutive upsets over Boston, Chicago, and Los Angeles, stimulating the Plumbers players into turning out for their strongest possible lineup for most of the season. Other teams expected to be contenders were discouraged by early setbacks; many were unable to maintain top strength. Soon it was an exciting 2-team race between Washington and New York.

Washington went  $\frac{1}{2}$  match point ahead when New York was held to a tie by Cleveland on March 24. On March 31, the leaders met head-to-head and Washington miraculously salvaged a tie, though the much higher rated New York team seemed on its way to an easy victory. The Plumbers were now  $4\frac{1}{2}-\frac{1}{2}$ , the New York Threats 4-1; wins by Washington in its three remaining matches would clinch the title no matter what New York did.

But April 7 saw a serious setback. A San Francisco team well below top strength held Washington to a tie. New York won and suddenly was in first place by  $\frac{1}{2}$  game point, with the teams tied at 5-1 in match points.

Rebounding from this unexpected reversal like true champions, the Plumbers wiped out the Houston Helpmates in the next round, April 21, by a record 6-0 score (no other match all year saw a margin greater than 5-1). True, Houston was mired deep in last place, but no other team beat them by more than  $4\frac{1}{2}-1\frac{1}{2}$ . New York barely salvaged a narrow  $3\frac{1}{2}-2\frac{1}{2}$  victory over Chicago the same night, staying in a 6-1 match point tie with the Plumbers but now trailing by 2 game points (game points determine standings when match points are tied).





In the final round May 12, Washington again overcame stiff opposition in fine style, defeating a Cleveland team which, after a slow start, had been playing the best chess in the league. Cleveland went into the match with  $3\frac{1}{2}$  match points in its last 4 matches and 16 game points out of its last 24. The Kinghunters had trounced Miami, San Francisco, and Houston and tied powerful New York over this period. No team had scored more than  $3\frac{1}{2}$  against Cleveland all season long, but Washington won by a convincing  $4\frac{1}{2}$ - $1\frac{1}{2}$  to nail down the league title. New York had its best result of the year the same night, routing Los Angeles, 5-1, but to no avail. The Threats' fine result merely shaved  $\frac{1}{2}$  game point off the Plumbers' winning margin. Washington and New York both finished with match records of 7-1, but in game points it was Washington 33, New York  $31\frac{1}{2}$ .

Even after their last round disappointment, the Cleveland Kinghunters still had reason to be pleased with their showing. They placed third on tiebreak ahead of several teams expected to beat them out in pre-season forecasts, and were the only team other than the top two to have a plus score in game points.

The San Francisco Dragons seemed to be playing somewhat below their potential most of the year, but made their game points count, achieving a plus score in matches despite a minus score in games. They edged Chicago,  $3\frac{1}{2}$ - $2\frac{1}{2}$ , in the final round to decide 4th place.

In the remaining May 12 match, Boston beat Houston,  $4\frac{1}{2}$ - $1\frac{1}{2}$ , to tie Chicago for 7th place. Boston and Los Angeles were probably the league's most disappointing teams; Boston scored only 1-2 with a very high rated lineup its first three matches and had to use many lower rated players for the balance of the year. Houston lost every match but surely would have done better if top board Hall had not left the team after 2 matches. With a much lower rated lineup than expected, the Helpmates actually made the exact game score their ratings forecast. Future league historians will note the Boston-Houston match for the first appearance of a woman in the league- Janette McGaughy played board 6 for Houston but was defeated by Boston Expert Larry Tapper.

As the Team Summary shows, Miami played slightly better than their ratings predicted. Chicago scored the predicted (by rating) number of game points, though their match score was disappointing.

By far the top individual scorer in the league was Robert Eberlein of Washington, who scored an amazing  $7\frac{1}{2}$ - $\frac{1}{2}$  on the low boards, often playing with his cat sitting on his shoulder. First board had the strength of a Category 7 international tournament! Had it been one, untitled Milan Vukcevic (and GM Kavalek) would have made the Grandmaster norm.

The league's first season was a rousing success. Newspaper and TV publicity was more than expected, though there is still room for much improvement. The league obtained more publicity for chess than anything since Fischer-Spassky, quite a "buy" for \$9000 (\$5000 contributed by the American Chess Foundation, \$4000 by USCF). Last year's Cleveland International cost the Federation 6 times as much and didn't obtain one-sixth the publicity!

The league will be continued next year. Hopefully funds will be available to add more teams (Milwaukee, Seattle, New Jersey, Philadelphia are among those interested), but this has not yet been decided. Interested teams should write Bill Goichberg at address on opposite page.



TEAM PERFORMANCE SUMMARY

	<u>W</u>	<u>L</u>	<u>D</u>	<u>Match points</u>	<u>Match pct.</u>	<u>Game points</u>	<u>Game pct.</u>	<u>Av. team rating</u>	<u>Team performance rating</u>
Washington...	24	6	18	7-1	.875	33-15	.688	2323	2448
New York.....	22	7	19	7-1	.875	31½-16½	.656	2431	2416
Cleveland....	21	17	10	4½-3½	.563	26-22	.542	2301	2331
San Francisco	13	15	20	4½-3½	.563	23-25	.479	2297	2272
Los Angeles..	15	18	15	3½-4½	.438	22½-25½	.469	2337	2272
Miami.....	12	18	18	3½-4½	.438	21-27	.438	2227	2241
Chicago.....	13	15	20	3-5	.375	23-25	.479	2286	2287
Boston.....	16	18	14	3-5	.375	23-25	.479	2299	2242
Houston.....	5	27	16	0-8	.000	13-35	.271	2126	2125

	<u>4/76 USCF rating</u>	<u>W</u>	<u>L</u>	<u>D</u>	<u>Score</u>	<u>Pct.</u>	<u>League performance rating</u>
HOUSTON HELPMATES							
John Hall.....	2338	1	0	1	1½-½	.750	2633
Ronald Henley.....	2313	1	4	2	2-5	.286	2234
Ken Smith.....	2292	0	0	1	½-½	.500	2310
David Babcock.....	2229	0	5	1	½-5½	.083	2016
Joseph Bradford.....	2216	0	0	1	½-½	.500	2239
Bruce Diesen.....	2164	0	0	1	½-½	.500	2301
Robert Atlas.....	2122	1	4	2	2-5	.286	2157
Robert Brieger.....	2073	0	3	3	1½-4½	.250	2089
David Willis.....	2049	0	2	0	0-2	.000	1899
Larry Englebretson.....	2042	1	4	2	2-5	.286	2095
Bill Reuter.....	2039	0	0	1	½-½	.500	2124
Jess Goodman.....	2004	0	1	1	½-1½	.250	1901
Robert Wright.....	1964	0	1	0	0-1	.000	1818
Billy Patteson.....	1957	0	2	0	0-2	.000	1811
Lorenzo Gaskill.....	1947	1	0	0	1-0	1.000	2588
Janette McGaughy.....	1558	0	1	0	0-1	.000	1724

LEAGUE PERFORMANCE RATING LEADERS (based on 4 or more games)									
1	Vukceвич, Clev.....		2476	5	1	2	6-2	.750	2618
2	Kavalek, Wash.....	GM	2521	4	0	4	6-2	.750	2612
3	Eberlein, Wash.....		2224	7	0	1	7½-½	.938	2559
4	Leow, Bos.....		2329	4	1	1	4½-1½	.750	2541
5	Powell, Wash.....		2311	4	0	3	5½-1½	.786	2536
6	Cornelius, SF.....		2242	4	0	1	4½-½	.900	2524
7	Matera, NY.....		2467	4	1	2	5-2	.714	2513
8	Weinstein, Bos.....	IM	2480	3	1	3	4½-2½	.643	2501
9	Christiansen, LA.....		2493	2	1	1	2½-1½	.625	2488
10	Soltis, NY.....	IM	2460	4	0	4	6-2	.750	2480
11	Shamkovich, NY.....	GM	2486	3	2	3	4½-3½	.563	2461
12	Mednis, NY.....	IM	2443	2	0	3	3½-1½	.700	2446
13	Kaplan, NY.....	IM	2436	3	1	0	3-1	.750	2443
14	Brummer, MI.....		2239	5	2	1	5½-2½	.688	2439
15	Ghizdavu, Clev.....	IM	2392	3	2	2	4-3	.571	2421
16	Diesen, Wash.....		2318	3	1	4	5-3	.625	2402



# UNITED STATES CHESS FEDERATION

PUBLISHERS OF CHESS LIFE & REVIEW

186 ROUTE 9W • NEW WINDSOR, NEW YORK 12550

April 29, 1976

Mr. Tom Weaver  
3617 Lamont  
Corpus Christi, TX 78415

Dear Tom,

As a former President of the TCA and a former editor of TEXAS KNIGHTS, I couldn't resist dropping you a note of congratulations on your issue of April-May 1976. These congratulations are also extended to all of the present officers of TCA. You fellows are displaying an enviable degree of teamwork and constructive progress which makes me proud to be a one-time Texan. Keep it up, and "let nothing you dismay."

Cordially,

E. B. EDMONDSON  
Executive Director



6 May 1976

Mr. Tom Weaver  
4506 Carroll Ln.  
Corpus Christi, TX 78415

Dear Tom,

You will by now have seen my letter of the 5th, in which you will have found that Bill McCarty and I have been thinking along the same lines in regard to marking specially somehow the state affiliate bulletins.

I entered the markings into the computer late last night, and they will begin to appear in the published lists starting in August.

Cordially,

MARTIN E. MORRISON  
Technical Director





# UNITED STATES CHESS FEDERATION

PUBLISHERS OF CHESS LIFE & REVIEW

FREDERICK TOWNSEND • VICE PRESIDENT • 10 BERMUDA ROAD • WETHERSFIELD, CONNECTICUT 06109

May 15, 1976

TO: USCF DELEGATES AND ALTERNATE DELEGATES

FROM: Frederick S. Townsend, Jr., Chairman of USCF Finance Committee

RE: Financial Status of USCF

Exaggerated rumors have been spread about the financial status of the USCF. Many of these rumors are NOT true. Specifically,

1. USCF is NOT losing \$1,000 per day.
2. USCF checks are NOT bouncing.
3. USCF is NOT bankrupt.

## USCF IS NOT LOSING \$1,000 PER DAY

Preliminary unaudited figures for the nine month fiscal year ending March 31, 1976 show that:

INCLUDING extraordinary expenses (\$62,000 for computer conversion and the relocation and remodelling of the new business office, plus \$26,000 to bring 180 delegates to Lincoln, Nebraska last summer), USCF has an operating loss of \$83,000 (\$300 per day) for fiscal 1976.

EXCLUDING extraordinary expenses, the USCF had an operating GAIN of \$5,000 for fiscal 1976.

## USCF CHECKS ARE NOT BOUNCING

Cash on hand on March 31, 1976 totalled \$144,000. This includes \$74,000 in the USCF checking account, \$50,000 in a Certificate of Deposit, and \$20,000 in a savings account.

## USCF IS NOT BANKRUPT

The net worth of the USCF approximated \$281,000 on March 31, 1976.

In summary, the USCF reported a moderate operating loss, INCLUDING extraordinary expenses, in a year of declining membership (probably due to the dues raise and the national economy) and rising costs. The Policy Board and Finance Committee have been working to seek economies and report a profit in fiscal 1977. Now that preliminary figures are available for fiscal 1976, it is my personal hope that "gloom and doom" statements made by aspirants for political office will be treated in their proper perspective and that we will all pull together to restore USCF membership growth.





# TEXAS CHESS ASSOCIATION

2615 BUCHANAN

ODESSA, TEXAS 79763

**BILL McCARTY**  
Secretary-Treasurer



**A REMINDER**



4-30-76

Listed below are names of memberships that are expiring during the months of July and August. Please renew at once.

PANHANDLE: REGION I. Harris, Peter; Henderson, Hugh; Meier, Jim; Snead, Bill; Webb, Tom (Amarillo) NORTH CENTRAL: REGION II. Campbell, Jerome; Kosel, Mark; Pennington, Fred; Roberts, James EAST TEXAS: REGION III. Bertram, Robert; Hill, E.J.; Johnson, Owen; McCready, Robert; Mapes, Bob; Thompson, J.C.; Wheelock, John WEST TEXAS: REGION IV: Jones, Richard; Riley, Jon; Yantis, Tom GULF COAST: REGION V. Adams, Larry; Baldwin, Terry; Cloys, John; Englebretson, Larry; Jones, David; Lowe, John REGION VI: CENTRAL TEXAS: Blackburn, Colin; Clement, A.G.; Hackner, Boris; Horn, Henry; Matthews, S.L.; Moore, M.D.; Quintanilla, Steve; Riley, Art; Sansing, Richard; Spitzer, Richard; Stahlman, M.S.; SOUTH TEXAS: REGION VII. Finke, Bob; Pardue, Larry; Patrick, Roy; Quintanilla, Domingo OUT-OF-STATE: Hulburd, George & Purser, Tom, both Okla.

## USCF-TCA COMBINATION DUE RATES

If you have not already renewed your membership, then please take the time to do so at once....and when you do please note that you may take advantage of these special combination due rates if you remit through the TCA secretary-treasurer. A regular membership in the USCF is \$ 15.00 per year however if you act now, you may join both USCF and TCA for \$ 16.00, resulting in savings of \$ 3.00. A USCF junior membership is \$ 8.00 per year however if you remit through the TCA then you pay \$ 9.00 and receive both USCF and TCA.

## BENEFITS OF USCF-TCA MEMBERSHIP

With the combination membership in USCF-TCA, you will receive both Chess Life and Review and Texas Knights. The first publication covers national and world chess news with the second covering state and regional events. You will be kept fully informed of what is happening pertaining to all aspects of chess. You will know when and where you may compete in over-the-board tournaments; you will be advised when you may purchase chess equipment or books at special savings; you will be informed of special events such as GM exhibitions, National Chess League results, etc. etc.

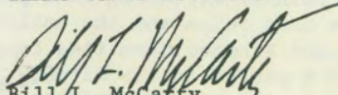
## BUT ACT NOW !!!

Please send your check or money order made payable to the Texas Chess Association; 2615 Buchanan Avenue, Odessa, Tx, 79763. Please indicate that you are buying either a regular USCF-TCA membership or a junior USCF-TCA membership and please indicate your eight-digit USCF ID number.

# Pronto!

USCF/TCA Reg. = \$ 16.00/yr.  
USCF/TCA Jr. = 9.00/yr.

Very best regards,  
TEXAS CHESS ASSOCIATION

  
Bill L. McCarty  
:Secretary-Treasurer



# GAMES

All annotations by Gary Simms unless otherwise noted.

1976 Texas Amateur Champs., Midland  
Alan Pope (1566) - Floyd Holder (1787)

1. PK4	NKB3	9. 0-0	BKB4	17. RxR	PKN3	25. KR2	BxB(1)
2. NQB3(a)	PK4	10. PQ4	PB4	18. QB3	RQ2	26. NxB	QxR
3. NB3	PQ4(b)	11. BR3(e)	QB2	19. BB1	PxP	27. PKB4	RK2
4. PxP	NxP(c)	12. PR3(f)	NB3	20. RK8+	KN2	28. QR7+	KB3
5. NxP	NxN	13. BQ3	BxB	21. NxRP!	PB4(h)	29. QR4	QKN1
6. NPxN	BQ3	14. QxB	QRQ1	22. BN5?!(i)	BK2(j)	30. NK4+	KK3
7. NB3(d)	0-0	15. KRK1	QR4(g)	23. QB4	QxBP	31. QB6+	KQ2
8. BK2	RK1	16. NN5!	RxR+	24. QR4?(k)	QK8+	32. NB5+	KB1
						33. White Resigns	

(a) One way of declining Alekhine's Defense.

(b) A sacrifice! or a blunder? Only the final outcome can decide that! (Editor: Gary practices this philosophy in his own games.)

(c) This move makes it a full-fledged sac (blunder?), 4...PK5 should be considered.

(d) 7. PQ4 would be more in keeping with White's need for quick development. The text move is an attempt to maintain a more solid pawn structure.

(e) 11. BK3 would be a more solid move to make awaiting the endgame.

(f) A dangerous loss of time.

(g) A move which, while pointing out the drawbacks of White's 11th, makes it difficult to organize a kingside defense.

(h) If 21...KxN; 22. QB6! and it would take a Houdini to escape mate in two.

(i) 22. NN5! and White's control of key squares combined with Black's weakened King should tip the scales.

(j) 22...KxN!; 23. BB6, RN2; 24. BxR, KxB; 25. PxP, QxRP; and Black is on top.

(k) This loses immediately, but it is difficult to find a good move now that Black's pieces become active and White's King is 'embarrassed.'

(l) Now all of White's pieces are attacked!

1976 Texas Amateur Champs., Midland  
Andrea Myers (1452) - Gerald Lopez (1370)  
Queen Pawn Opening (Colle System)

1. PQ4	PQ4	9. NxP	NxN	17. BN2	RKN1	24. QB4	RQ1
2. NKB3	NKB3	10. BxN	NB3	18. QQ2	NN5(d)	25. PN4	PR3
3. PK3	PQB3	11. BQ3	BQ3	19. NxN	QxN	26. PR4	KN1
4. QNQ2	QR4(a)	12. RK1	QR4!	20. RK4	QR4	27. PN5	RPxP
5. PB3	BN5	13. PKR3	BxP?(b)	21. QK2	QR3(e)	28. PxP	PxP
6. BQ3	PK3	14. PxB	QxP	22. BQ2	0-0-0	29. QxNP	QB3?
7. 0-0	QNQ2	15. NK5!	PKN4	23. RK1(f)	QRK1(g)	30. RxP!	Black
8. PK4	PxP	16. BB1(c)	QR5				Resigns (h)

(a) It seems a little early for this queen sortie.

(b) Not all kingside sacs work! Instead 13...BxN; 14. QxB, QxQ; 15. PxQ gives Black a very good game.

(c) 16. QB3 is even stronger, e.g. 16...QR3 and the Black pawns are stopped for the moment.

(d) 18...NR4, aiming for B5 was stronger. After the text move, the Kingside pieces dwindle to the point that the attack fizzles.

(e) 21...QR7+; 22. KB1, PKR4; must be tried.

(f) A mysterious rook move.

(g) Whatever is going to happen on the king file, Black wants to be in on it, too!

(h) What will the boys back home say about me 'letting' a woman do me this way!?

Oh well, remember the Vera Menchik Club!



1976 Texas Amateur Champs., Midland  
 Walter Stapp (1546) - Dean Yarbro (1851)  
 'My book can beat your book'

1. PK4	PK4	7. BN3	0-0	13. RK1	QR5	19. PN3?(a)	PB5
2. NKB3	NQB3	8. PB3	PQ4	14. PN3	QR6	20. PB4	PxNP
3. BN5	PQR3	9. PxP	NxP	15. QQ3	BKN5	21. RPxP	BxP
4. BR4	NKB3	10. NxP	NxN	16. QB1	QR4	22. White resigns	(b)
5. 0-0	BK2	11. RxN	PQB3	17. BQ1	BxB		
6. RK1	PQN4	12. PQ4	BQ3	18. RxB	PKB4		

(a) Would you believe the first 18 moves are all "book"? According to The Marshall Attack by Wade & Harding they were played in Usachi-Olifer, 1960. What good are book moves if you play a known line for 18 moves and resign on the 22nd? It doesn't matter how many moves you memorize, just make sure it's one move deeper than your opponent! In the referenced game, the continuation was 19. RQ3, PB5; 20. QQ1?(NQ2), QN3, 21. PN3, RB3; 22. PQR4, RK1; 23. KN2, R3K3; and "Black had a strong attack."  
 (b) The threats of 22...QR7 mate and 22...BxP+ are bad enough, but the added insult of having the rook on Q1 hanging is too much.

North Texas Limited 2000, Denton  
 Mike Richards (1677) - James Haanan (1807)

1. PK4	NKB3	9. BxP+!	KK2	17. BN3	PKN4?	24. QQ7!	RK6
2. NQB3	PK4	10. BN3	QQ3	18. PKB4!	KPxP	25. QB7+	KK4
3. BB4	BB4	11. BK3	NxN+	19. QR5	QB3+	26. QK6+	KQ5
4. NB3	PQ3	12. PxN	BR6	20. PB3	NK4	27. PB3+	KxP
5. 0-0	NB3	13. RK1	NxKP!	21. QR6+	NN3	28. QB4+	KQ7
6. PQ3	BKN5	14. KR1	NB3	22. QxB	QxP+	29. QRQ1+	QxR
7. NQR4	NQ5?	15. BKB4!	NQ2	23. KN1	QRK1	30. RxQ	Mate
8. NxB	PxN	16. QK2	KB3				

This and the next game were sent in by TD Gary Rodgers along with several more scores. I chose this and the following game just to give heart to those who sometimes have a bad day and think all the bad luck in the world is theirs--no it isn't, just look at what happened in Mr. Haanan's next game.

North Texas Limited 2000, Denton  
 James Petty (1530) - James Haanan (1807)

1. PQ4	PQ4	4. PQB4	PxBP	7. QB3	QxB
2. BN5	PQB4	5. BxBP	PxP	8. BN5+	BQ2
3. PK3	QN3	6. QxP	QR4+	9. QB8	Mate

National Chess League, Houston - Cleveland, 1976  
 Larry Englebretson (2042) - Robert Burns (2185)  
 Sicilian Defense by Transposition

1. NQB3	PQB4	8. BN3	PQ3	15. PKR4	QxBP	22. BPxP	NR4
2. NB3	NQB3	9. PB3	BQ2	16. KN1	PR4	23. QxN5	PK4
3. PQ4	PxP	10. QQ2	RB1	17. PR5	PR5	24. QxP+	KB1
4. NxP	PKN3	11. 0-0-0	NK4	18. PxP	NxNP	25. NB5	QB7+
5. PK4	BN2	12. BR6	BxB	19. PN4	RB1	26. KR1	BxN
6. BK3	NB3	13. QxB	RxN	20. RQ3	QB4	27. PxB	QxR
7. BQB4	0-0	14. PxR	QR4	21. PN5	PxB	28. PxN	QB6+

Drawn by Perpetual Check

Houston Chess Club, 1976  
Robert Harrington (1668) - Barry Endsley (1708)  
Closed Sicilian

1. PK4	PQB4	11. QQ2	NK4	21. NQ4	QR3	31. PN5+	KR4
2. NQB3	NQB3	12. QK2	PQN4	22. BB2(b)	BB1	32. QN7	NB4
3. PKN3	PKN3	13. QRQ1	BN2	23. BR3	KR1	33. QxR	QxKP
4. BN2	BN2	14. PN3	RB1	24. NxKP!	PxN	34. QxRP+(e)	KN5
5. N1K2	PK3	15. NN1	QB2	25. BxP	RB2	35. BQ5	BxB
6. 0-0	N1K2	16. PKB4	N4B3	26. BQ4+	BN2	36. PxB	NR5
7. PQ3	0-0	17. NxN	QxN	27. BxB+	KxB	37. QQB7	RK1
8. BK3	PQ3(a)	18. NR3	KRQ1	28. QN2+	KR3(c)	38. QQ7+	KR4
9. PQ4	PxP	19. PB4	PN5	29. PN(d)	QN3+	39. PKR3!(f)	
10. NxP	PQR3	20. NB2	PQR4	30. RB2	QK6		Black resigns.

Notes by Robert Harrington and checked by Gary Simms.

(a) E.C.O. gives 8...NQ5! After PQ3?! Black's queen pawn is weak since his bishop is on N2 instead of K2.

(b) Preventing the freeing move PQ4, because Black's knight is unprotected.

(c) If 28...KB1, White mates starting with QB6+.

(d) Threatening mate in three by 30. PN5+, 31. QK2+; 32. QN4 mate.

(e) If 34. QxR?, QR8 mate.

(f) Threatening mates on N4 and R7 with the queen. Since both can't be prevented, Black resigned.

Corpus Christi Chess Club, 1976  
Domingo Quintanilla (1658) - Tom Weaver (1802)  
The Gruntfeld Misplayed

1. PQ4	PKN3	7. PxN	PQB4	13. PxP	PQN3	19. QN3+	KR1
2. NKB3	BN2	8. BN5+	BQ2	14. PK5	KRB1	20. NB7+	KN1
3. PQB4	PQ4	9. BxB+	NxB(a)	15. BQ2	QR3	21. NR6+	KR1
4. PxP	NKB3	10. 0-0	0-0	16. NN5(c)	QB5	22. QN8+	Resign,
5. NB3	NxP	11. BK3	QR4	17. QB3	PB3		since if RxQ
6. PK4	NxN	12. QN3	PxP(b)	18. KRB1	QxQP(d)	23. NB7	Smothered Mate

I'm printing this game as part of the TCA Affirmative Action Program.

Notes by the bitter loser:

(a) 9...QxB works better I now think.

(b) 12...NB3; 13. QxNP, QRN1; 14. QxKP, KRK1; 15. QxQBP looked unappetizing.

(c) Oh, Oh! Is this knight fixing to do his droppings on my exalted king?

(d) Everything else fails to lose as quickly. Now the horse maneuver descends.



## Henley Whips a Grandmaster

1976 Statham Masters Tournament, Lone Pine, California  
Gyozo Forintos (2490) - Ronald Henley (2298)  
English Opening

1. PQB4	NKB3	13. PB3	PQR4	25. RKB1	BB4	37. QXB+	QxQ
2. NQB3	PK4	14. BK1	QK2	26. KN1(d)	PQ4!	38. RxQ	PK6
3. PKN3	PQ3	15. RQ1	PQB3	27. PxP	PxP	39. RK4	PK7
4. BN2	PKN3	16. KR1	PB4	28. NxQP	QB4	40. PKR3	RxP!(h)
5. PK3	BN2	17. PxP	PxP	29. NB3	NxNP(e)	41. RK8+	KN2
6. KNK2	0-0	18. NR5	BR3	30. QxN	QxP+	42. KN1(i)	BR4
7. 0-0	QNQ2	19. PB4	NN2	31. KR1	QxN	43. RK3	KB3
8. PQ3	NR4	20. BN3	KR1	32. QxP	QRN1	44. PR3	PR3
9. PKN4?!(a)	KNB3	21. KRK1?	PK5!	33. QR7	RN7(f)	45. PKR4	BN5(j)
10. NN3	NK1!(b)	22. PxP	PxP	34. RB2	RxR	46. PR5	KN4
11. BQ2	NB4	23. NxN	BxN(c)	35. BxR	BN5	47. RK5+	KR5(k)
12. QK2	QR5	24. QQ2	NQ6	36. BQ4?(g)	BxB	48. White resigns	

(a) An original but somewhat dubious idea. The pawn advance leaves White's KR4 weak and leads to a general deterioration of his kingside pawn formation.

(b) A dual purpose move, clearing the way for the advance of the king bishop pawn and creating a path for the queen to go to KR5.

(c) As a result of 21...PK5, Black has obtained excellent diagonals for both his bishops and the K5 pawn anchors a commanding knight outpost on Q6.

(d) Now White threatens to break his bonds with 27. NxP, BxN; 28. BxB, QxB (which is no longer check); 29. QxN.

(e) The point of 26...PQ4! Black regains his pawn, keeping the upper hand.

(f) The move 33...PK6! threatening the fork 34...PK7 would have led to a swift knock-out, whereas White now is temporarily back on his feet.

(g) Anxious to simplify, Forintos underestimates the strength of Black's passed king pawn. This was the losing move.

(h) A passed pawn on the seventh rank gives rise to all sorts of little combinations. If 41. PxB, then 41...RxR, and the pawn queens.

(i) 42. PxB loses to 42...RB8+ and then queening.

(j) White has run out of constructive moves. King or bishop moves succumb to RKB8.

(k) Now White's rook must move along the king file, leaving the king rook pawn as booty. Then the advance of Black's king rook pawn will decide.

The above annotations appeared in USCF Master John Jacob's column, "Chess," Dallas Times Herald, April 18, 1976. When the editor discussed the annotations with Henley, I learned that Ron has a high opinion of Jacob's analysis--he was particularly impressed

by the fact that Jacobs picked out and made almost the identical comments that he had made to himself during post mortem analysis of the game. The only quibble that Henley or I might have with Jacob's article is that John stated that Henley "thus becomes the first Texas chess player ever to defeat a grandmaster."

Leaving aside the obvious fact that Texans have won numerous skittles games from GM's (I once beat Benko in a simul--believe it or not!), I asked Games Editor Gary Simms if he knew of any rated tournament games won by Texans against GM's. The USCF Master replied, "Although I can remember several draws (Jacobs-Reshevsky, Dunning-Kavalek, etc.) I can't recollect any wins. The only thing I wonder about is Smith...as much as he's been around, surely...but I don't recall a single time."

Since Jacobs lives near Kenneth Smith, I figured John would know Ken's record on this point so evidently Ken's draw against Keres at the 1972 Church's Fried Chicken International, San Antonio, has to be listed as our many-time state champion's high point.

But an inquiry to Lynne Babcock finally struck pay dirt. She says Eric Bone once defeated Pilnick of Italy. Whether or not Bone's victory was the first by a Texan over a GM in serious play I still don't know.

Getting back to Henley, I should point out that his Hungarian victim bounced back to win five straight games to tie for second at Lone Pine--the man is no fish! Ron, on the other hand, is a...uh...very gentle young man with aspirations of winning the 1976 U.S. Junior Championship. Really.

Ron got to know the other strong junior players during their USCF sponsored team trip to Scandinavia. He says that his chances for the U.S. Junior are good and I believe him--look at the way he beat one of his major rivals, Michael Rohde (2343), in their individual encounter at Lone Pine. In fact, Ron's only two losses at Lone Pine were to GM's Browne and Quinteros.

The U.S. Junior is a short, sharp tournament--anybody could get hot and win--but Texans in the know are betting on a certain Mr. Henley.

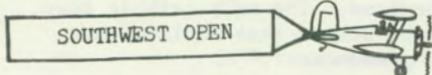
\*\*\*\*\*

Below are the Henley-Moss annotations that would have appeared on page 13 of the last T.K. if there had been enough space.

(1 A very solid line against the Pirc defense. (2 Better was the obvious 1. ...Rd8. (3 Taking advantage of black's last move, the idea is to force black's Queen to e7 to prevent a kingside attack. Once the Queen is on e7, white will play his bishop to the a3-f8 diagonal! (4 All according to plan. (5 Using the Queen to provoke the following weakness, and allowing the white knight a retreat square on f3. (6 17. ...Nc6 is better. (7 The correct idea too late. (8 Worth considering is 26. Nb6 giving up the exchange to exploit black weak pawns and squares. Also 26. R/3-d2 is strong. (9 If now 29. Qh6+? Kg8 and white loses the exchange. (10 Leading to a strategic win. (11 Creating one too many weaknesses. (12 A consistent plan. (13 A sad necessity but he must prevent 47. Bh4 after which the white rooks would surround his king. (14 Of course not 48. Bh4 Kg6 and white loses the B. (15 Now 49...Re6 was not plausible because of 50. Bc5, the point of 47. Bf2! (16 Not rushing to eat the "h" pawn; it won't go anywhere. (17 Preventing 55. Ra-h7 followed by Kg4 and Rh4-h6 Mate. (18 Wrong Rook!! Correct was 57. R/7-h6+ winning (19 It still wasn't too late to retract my last move and play 59. Rh5+ Kg6 60. R/7 H6+ and 61. Rb6 with a hard earned point. (20 Black, in time trouble, misses 58...Rh1+!! 59. Kh1 Rd1+ 60. Kh2 Rh1+ 61. Kh1 Stalemate!!



## COMING ATTRACTIONS



July 3-4  
Big 'D' Open  
Dallas

5-SS at Dallas Chess Club, 5513-1/2 East Grand (1 block off I.H. 20, E. Grand Exit). EF: \$15 (\$10 to DCC members), non-TCA.

GRANDE PRIX EVENT  
July 10-11  
South Texas Open  
Victoria

5-SS, TL 45/2, at Totah's Motel, 2911 Houston Highway, Victoria, TX 77901. EF: \$15, Jrs. \$12.50, USCF & TCA required. PRIZES: Cash and trophies per entries. REG: 8-9:30 a.m., Sat. RDS: 10-2:30-7:30, 9-2:30. TD: Carolyn Patrick. ENT: Joe Lucke, 709 E. Mistletoe, Victoria, TX 77901.

July 17-18  
Texas Womens' Championship  
Houston

5-SS, TL 45/2 will be held near HCC, 4714 Fannin, Houston. EF: None, USCF & TCA required (TCA memb. will be donated to entrants that are without it). PRIZES: \$50-30, under 1400, \$20. Also trophies to first, second, top under 1400, top unrated. REG: 8-9 a.m., Sat. RDS: 9:30-2-7:30, 9:30-2:30. ENT: Lynne Babcock, c/o HCC, 4714 Fannin, Houston 77004.

July 17  
Fifth Javelina Open  
Kingsville

3-SS, TL 40/90, 8-man sections at Texas A&I Univ., Room 309 of Rhode Hall. EF: \$3. PRIZES: Trophies to 1st in each section. ENT: Bruce Payne, P.O. Box 2343, Kingsville, Texas 78363.

July 17-18  
N.T.S.U. Summer Swiss  
Denton

5-SS at North Texas State Univ. Non-TCA. Details unknown. ENT: Gary S. Rogers, 307 Bryan #4, Denton, TX 76201

July 17-18  
4th Annual Texas in Texas Open  
Amarillo

5-SS, 45/2, at Travelodge West, 2035 Paramount, Amarillo, TX 79109. EF: \$12.50 if received by July 10 (\$8 for jrs.), \$15 (\$10 jrs.) at site, USCF & TCA required. PRIZES: Trophy to First, top 'C,' top 'D,' and top 'E & U,' plus cash as entries permit. REG: 8-9 a.m., Sat. RDS: 9:30-2-7, 9-2. TD: Bill Snead. ENT: John Jacobs, 1900 Carolina, Amarillo, TX 79102.

July 30-Aug 1  
\$300 Cordova-Thurman Introductory Offer  
El Paso

5-SS, 50/2, at Cordova-Thurman Interior Designs, 1141 Larry Mahan Dr., El Paso, TX 79925. EF: \$12.50 if received by July 28 (\$5 for jrs. aged 14-18), \$15 (\$7.50 jrs.) at site. PRIZES: \$300 fund plus trophy to First, and top in Class 'A,' 'B,' 'C,' 'D,' 'E,' 'Unr,' 'Woman,' 'Up-set,' 'Jr. 14-18,' and 'Jr. < 14' providing a minimum of 4 entries in each category. REG: 4:30-6:30 p.m., Fri., or 8-9 a.m., Sat. RDS: 7:30 p.m. Fri. optional or can request 1/2 pt. bye if registering in advance, 10-4, 8:30-2:30. ENT: Dr. Lindsay Phillips, 4621 Sun Valley, El Paso, TX 79924.

Aug. 28-29  
Houston Junior Championship

For this and other club tournament information contact the H.C.C., 4714 Fannin, Houston, Texas 77004.

Sept. 4-6  
GRANDE PRIX EVENT  
43rd Annual Southwest Open  
San Antonio

7-SS, note details on Pg. 3 advertisement by San Antonio Chess Club in this issue. Remember to attend the Annual Business meeting of the T.C.A. on Saturday from 6-7 p.m. This is when officers are elected and the next year's T.C.A. tournament locations decided by open vote. PRIZES: \$4,000 minimum! ENT: Pete Prattes, P.O. Box 7231, San Antonio, TX 78207.

Sept. 25-26  
3rd Annual Grimes County Open  
Navasota

5-SS, T.C.A. & U.S.C.F. required. Details in later issue of T.K. ENT: John Garcia, Box 704, Navasota, TX 77868.

Key to Abbreviations

# CALENDAR

Calendar - Coming Events, should be scheduled 3 months in advance.	June 26-27 Tex. Jr. Champs, San Antonio
CC - Chess Club	June 26-27 Hub City O., Lubbock
EF - Entry Fee	July 3 1-Day Swiss, Houston
ENT - Where to send entries	July 3-4 Big 'D' O., Dallas
Gold Star - Dates that have been reserved for club events such as matches or city championships.	July 10-11 So. Tex. O., Victoria
Grande Prix - Tournament that has paid \$25 into the TCA Grande Prix Fund - which fund is rewarded each year to the player who has won the most 'Grande Prix Points.'	July 17-18 Tex. Womens' Champs, Houston
O - Open tournament, anyone who pays may enter.	July 17-18 Tall in Texas O., Amarillo
RDS - Times that rounds start, Sat. and Sun. unless noted otherwise.	July 24-25 Houston D, E, U Champs
REG - Registration period 'at the door'	July 31-Aug 1 Cordova-Thurman, El Paso
SS - Swiss System pairing, basically means that players with the same totals will be matched by the TD.	July 31-Aug 1 Houston C Champs
TD - Tournament Director	Aug. 3-8 No. American O., Okla.
TO - Tournament Organizer	Aug. 7-8 Houston B Champs
TL - Time Limit, number of moves that must be made in a certain period of time such as '45 moves in 2 hours.'	Aug 14-15 TCA Gold Star Date
	Aug. 15-27 1976 U.S. Open, VA
	Aug. 28-29 Houston Jr. Champs
	Sept. 4-6 SW Open, San Antonio
	Sept. 11-12 TCA Gold Star Date
	Sept. 25-26 Grimes Co. O., Navasota
	Oct. 9 National Chess Day
	Oct. 23-24 Amarillo Fall O.
	Nov. 13-14 So. Plains O., Lubbock
	Nov. 20-21 TCA Gold Star Date
	Nov. 27-28 Tex. Open, Corpus C
	Dec. 4-5 Amarillo Dec. O.
	Feb. 12-13 El Paso O.
	Aug. 13-26 1977 U.S. Open, El Paso

## The Superstars

1976 Houston Open (Reserve Section)  
 Mike Greco (1777) - Hartwig Volz (Unr.)  
 Catalan System

1. PKN3	PK4	10. NB3	0-0	19. QQ2	PB3	28. BB3	RxR+
2. BN2	NQB3	11. BB3	BQ3	20. BN3	BB2	29. RxR	BxP
3. NQB3	NB3	12. QK2	PKB3	21. PN4	BK3	30. PB4	BB3
4. PQ3	BN5	13. 0-0-0	QB1	22. BxB	QxB	31. BxB	QxB
5. BQ2	PQ4	14. PQ4	PxP	23. PN5	QB4	32. QxP	QQN3
6. PQR3	BK2	15. NxP	NxN	24. QN2	PxP	33. QKB7	RKN1
7. PK4	PxP	16. BxN	BB4	25. PKR4	BB5+	34. RQ7	PQR4
8. NxP	NxN	17. BQ5+	KR1	26. KN1	QRQ1	35. QQ5	PR3
9. BxN	BK3	18. PKB3	RK1	27. PxP	PB4	36. RQ6	QB2
						37. QK5	Black Resigns

This game was played under a lot of pressure.

It was the fifth round of the Houston Open and both players were 4-0. Greco, an unknown from Mississippi, and Volz, a German rumored to be of master strength, had been mowing down their opposition as if murder had been legalized. Four other players were undefeated going into the last round, but they all drew, so this shoot-out proved to be for the championship.

1976 Houston Open  
 Robert Atlas (2122) - David Willis (2049)  
 Modern Benoni

1. d4	Nf3	6. e4	g6	11. h3	Qc7	16. Ng3	d:e
2. c4	c5	7. Bd3	Bg7	12. f4	Rb8	17. f5	e4
3. d5	e6	8. Nge2	0-0	13. Be3	c4	18. d6	N:d6
4. Nc3	e:d	9. 0-0	a6	14. Bc2	Nc5	19. f6	Rd8
5. c:d	d6	10. a4	Nbd7	15. e5	Ne8	20. Nd5	Black Resigns

This was the other fifth round king-maker.



## Publication information . . . staff . . . subscriptions

The T.C.A. is a non-profit organization devoted to the promotion of chess in Texas, and is the only statewide association of chessplayers. The T.C.A. is an affiliate of the U.S. Chess Federation and Texas Knights is the official publication of the T.C.A.

Membership is available to any Texas resident for dues of \$4/year except \$3/year for juniors (under 18) and persons joining under the Family Plan (\$1/year direct to the T.C.A. Sec.-Treasr. if one member of the family is a full T.C.A. member). Associate membership is available to non-state-residents but this does not include voting rights at the T.C.A. Annual Business Meeting.

Please send all membership applications, renewals, and changes of address to the Sec.-Treasr. All contributions of chess material for publication go to the Editor; advertising is \$35/full page, \$20/half page. Deadline for the June/July issue is July 1, 1976.

### Officers

President: Larry Englebretson  
4633 Wild Indigo #532  
Houston, TX 77027  
(713) 673-1175

Vice-President: Jack Taylor  
315 Lakeside Dr.  
Channelview, TX 77530  
(713) 452-7260

Sec.-Treasr.: Bill McCarty  
2615 Buchanan  
Odessa, TX 79763  
(915) 337-4732

Editor: Tom Weaver  
3617 Lamont  
Corpus Christi, TX 78415  
(512) 852-5888

Junior Chess: Lindsay Phillips  
4621 Sun Valley Drive  
El Paso, TX 79924  
(915) 821-9556

Postal Chess: Ken Hackney  
306 Northgate Drive  
Nacogdoches, TX 75961

Grande Prix & T.C.A. Calendar:  
Clarence Callaway  
524 Cox Drive  
Irving, TX 75062  
(214) 255-6600

Games Editor: Gary Simms  
4113 Tulane  
Amarillo, TX 79109

# TEXAS KNIGHTS



Return Address:  
Bill McCarty  
2615 Buchanan  
Odessa TX 79763



TO:

EUGENE KOHNITZ  
4462 WALZEM ROAD  
SAN ANTONIO, TX 78218

